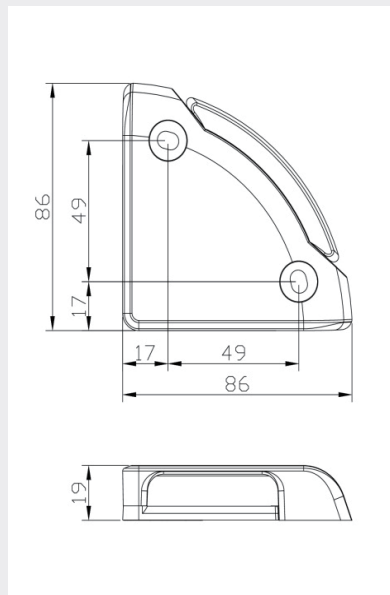


TECHNICAL SPECIFICATIONS

Type	Amber DI/Marker Tail Lift Lamp
Voltage	10-30VDC
LED's	9 x 1.5W LED's
Power	13.5W
Max Current Draw at 12VDC	0.45A
Flash Patterns	18
IP Rating	IP67
Fly Leads	250mm
Material Construction	Cast Aluminium with PC Lens.
Weight	0.140Kg
Dimensions	Please see below
Operating Temperature	-35°C ~ +65°C
Storage Temperature	-35°C ~ +65°C
Certificate	CE, E Mark R10 (EMC), R6 (DI), R91 (Marker)

TECHNICAL DRAWING



0-170-45 - 10-30V Amber Tail Lift Marker DI Lamp

Durite's Ultra Robust Amber Tail Lift Lamp. 10-30V. 1.5W x 9 LED's. 18 Flash Patterns. Super strong cast aluminium construction with durable PC Lens. E Marked R10.05, R6 (DI Function) and R91 (Marker Function).



THE TRUSTED QUALITY BRAND FOR PROFESSIONALS

Wire Function

Red = Positive 10-30VDC

White = Negative -VDC

Black = Flash Pattern Select. Sync Control.

Flash Pattern Control

Change flash pattern

Touch Black and White wire together once in one second.

Reset flash pattern

Touch Black and White wire together three times in one second.

Synchronization

Select the same flash pattern for each lamp. Connect all lamp Black wires together to sync the lamps.

Alternating Flash

Set LIGHT#1 Group

With all Black wires connected. Touch the Black wire to the White wire 5 times in one second.

The light will flicker then touch the Black wire to the White wire one time to get "Single Flash" pattern. Disconnect and reconnect as set Light#1 group.

Set Light#2 Group

With all Black wires connected. Touch the Black wire to the White wire 5 times in one second.

The light will flicker then touch the Black wire to the White wire twice to get "Double Flash" pattern. Disconnect and reconnect as set Light#2 group.

NOTE: Flash Patterns #8, 10, 16, 17 or 18 cannot be selected when multiple lights are connected

Flash Patterns

FP#	Flash Patterns	
1	Steady light 1 (66%) - DI	N/A
2	6 Flash	1.02HZ
3	Steady light 2 (15%) - MARKER	N/A
4	Single Flash	2.04HZ
5	Double Flash	2.04HZ
6	3 Flash	2.04HZ
7	4 Flash	2.04HZ
8	Random	N/A
9	Single Flash	1.25HZ
10	Rapid Single Flash	N/A
11	Double Flash	1.25HZ
12	3 Flash	1.25HZ
13	4 Flash	1.25HZ
14	5 Flash	1.25HZ
15	8 Flash	1.25HZ
16	Alternate Single Flash & 4 Flash	N/A
17	Alternate Rapid&Slow Single Flash	N/A
18	Alternate FP#1 FP#3 FP#5	N/A