



0-071-55 - 5 Function LED Rear Combination Lamp Universal Fit L/R

Durite's LED 5 Function Rear Combination Lamp:

STOP/TAIL/DI/REVERSE/REFLEX

- Surface Mount
- Multi-voltage alternative for mixed fleet applications
- Highly durable polycarbonate lens, built to withstand the tough working conditions of any commercial vehicle

CE, E Marked ECE Approved.

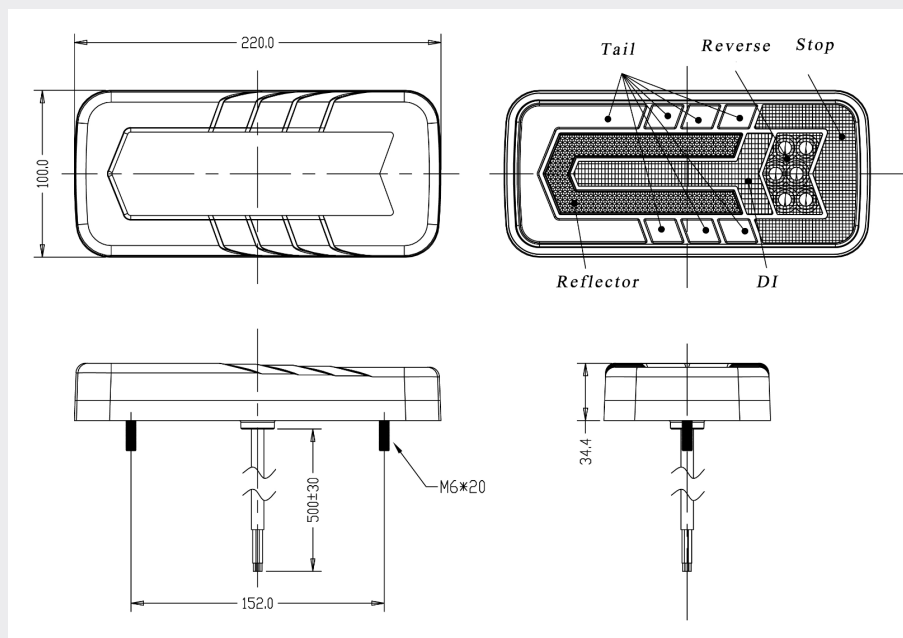


THE TRUSTED QUALITY BRAND FOR PROFESSIONALS

TECHNICAL SPECIFICATIONS

Type	LED 5 Function Rear Combo Lamp - Universal Fit L/R
Voltage	10-30VDC
Functions	STOP / TAIL / DI / REVERSE / REFLECTOR
Current Draw at 12VDC	Stop 0.15A, Tail 0.18A, DI 0.23A, RE 0.2A
Power	Stop 1.8W, Tail 2.1W, DI 2.8W, RE 2.5W
IP Rating	IP67
Material Construction	ABS, PC Lens
Weight	0.650Kg
Dimensions	See below diagram
Operating Temperature	-40°C ~ 60°C
Fly Lead	500mm
Certificate	CE, ECE E Mark

TECHNICAL DRAWING



Additional Information:

Wire Colours:

Red = Stop

Green = Tail

Yellow = Direction Indicator

White = Reverse

Black = GND