



# VAN SPECIALIST EQUIPMENT

Durite offers Specialist LCV equipment to help you manage & make the most of your fleet. We bring you the latest technology and highest quality components; from Vehicle Safety, Lighting to the 1000s of core components that keep your vehicles going, we have the perfect solution for you, your fleet and your business.

- ✓ DASH CAMS
- ✓ DVR KITS
- ✓ CAMERA MONITORING SYSTEMS
- ✓ WARNING LIGHTS
- ✓ INTERIOR LIGHTS
- ✓ INVERTERS



**THE TRUSTED QUALITY BRAND FOR PROFESSIONALS**

+44 (0) 1255 555200 | +44 (0) 1255 555222  
sales@durite.co.uk | www.durite.co.uk

Follow us @DuriteLimited



LOGISTICS UK



# RECORD EVIDENCE & TRACK YOUR FLEET

## DASH CAMERAS

The Durite 1080p Full HD dash cams provide a clear view of vehicle registrations and they also benefit from a 170° ultra-wide view angle. Tamper-proof with password protection and security seal\*, select between our forward-facing or 2-camera models.

\*security seal optional

**1080P FULL HD DASH CAMERA WITH GPS - 12/24V**  
PART NO. 0-776-60



**4K ULTRA HD DASH CAM WITH WIFI & GPS - 12/24V**

“Wi-fi download”



4K DASH CAMERA | PART NO. 0-775-53

4K DASH CAMERA & REVERSE CAMERA | PART NO. 0-775-44

**GREAT VALUE 1080P FULL HD DASH CAMERA - 12/24V**  
PART NO. 0-775-45



**1080P FULL HD SAFE LOCK DASH CAMERA - 12/24V**  
PART NO. 0-775-70

“Key lock keeps SD card safe”

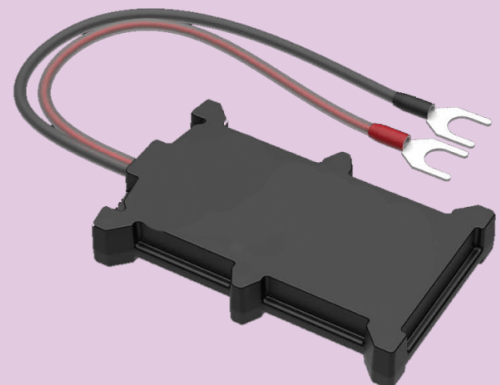


## SMART TRACKER

PART NO. 0-875-60

- ✓ 2-wire fixing for easy & secure installation
- ✓ Generate SMS & Email alerts
- ✓ IP65 - Solid waterproof case
- ✓ Internal backup battery lasts up to 12 hours
- ✓ Easy data access on Durite Telematics Portal
- ✓ Live tracking & monitoring for your fleet or vehicle in real time

“Small, discrete & secure. Just wire it to any power source on your vehicle & start tracking your trailer or fleet”



FLEETS



TRAILERS



CONSTRUCTION

# DVR KITS



Looking for integral DVR kits, go to page 4.

## SD CARD DVR KITS

- ✓ 7" high-resolution TFT LCD
- ✓ Less prone to vibration
- ✓ Perfect for 12/24V applications
- ✓ 2-year warranty



### 960H SD DVR KIT

Part no. **0-775-76**

### 720P SD DVR KIT

Part no. **0-775-36**

\*support up to 2 x 128GB SD/TF card (not included) 1 x 32GB included.



Standard or HD Resolution



SD Card



Password & lockable cover

## HD HARD DRIVE DVR KIT

"Record crystal-clear video footage"

- ✓ 7" high-resolution TFT LCD
- ✓ Crystal-clear view of vehicle registrations
- ✓ Vibration resistant design
- ✓ 3-year warranty



720p HD 5-channel DVR & 4 cameras

Part no. **0-775-87**



HD Resolution



Hard Drive



4 cameras



4G Connectivity to access the Durite Live portal



Tamper-proof data secured to the CLOUD



HD resolution Crystal clear evidence



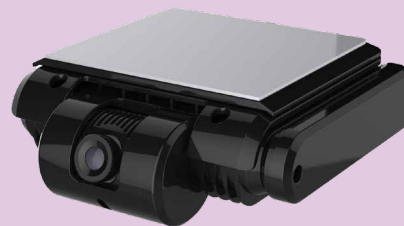
Live location & GPS journey

# RECORD & 4G LIVE STREAM

## 4G TECHNOLOGY ALLOWS YOU TO LIVE STREAM VIDEOS AND ACCESS INCIDENT DATA & REPORTS REMOTELY.

- ✓ View footage & provide evidence in case of an incident
- ✓ Comprehensive report including exact location & speed
- ✓ Automatically locks recording & secures to the cloud
- ✓ Downloadable footage from your PC for quick claim settlement

"Follow your fleet on a map. Get real-time notifications in case of an incident."



4G Live streaming 1080p FHD Forward-facing camera | Part no. **0-876-08**



**INTEGRATES WITH DURITE LIVE\***  
Remotely live stream, receive alerts and download incident footage from any device



4G Live Streaming DVR kit | Part no. **0-876-39**

# MANOEUVRE SAFELY

Durite offers a comprehensive range of high-quality CCTV monitoring kits. High-resolution monitors and cameras increase the drivers' awareness of their environment, assist drivers to reverse and manoeuvre safely and help to prevent road accidents by reducing blind spots.

## CCTV KIT WITH INTEGRAL DVR

- ✓ Suitable for 12/24V applications
- ✓ No separate DVR box means easy installation
- ✓ 480GB Solid state drive
- ✓ 7" or 9" Touch screen option
- ✓ 6G Anti-vibration protection

**"Record evidence directly on your monitor"**

7" CCTV kit & 4 cameras | Part no. 0-774-03

9" CCTV kit & 4 cameras | Part no. 0-774-00



Built-in DVR



Password protected & built-in lock



Looking for a wireless integral DVR kit Part No.0-775-59, visit [durite.co.uk](http://durite.co.uk)



## ULTRASONIC REAR SENSOR KIT

- ✓ Visual & audible warnings with LED warning buzzer
- ✓ Detection within 0.2 seconds up to 2.2M
- ✓ ECU protected to IP69K, sensor & connector protected to IP68
- ✓ Shock & vibration resistant
- ✓ Environment learning mode
- ✓ System self-checking function



Detection up to 2.2m



System self-checking function



Reversing 4-sensor kit | Part no. 0-870-05

## 2-CHANNEL CCTV MONITORING KIT - 12/24V

PART NO. **0-776-66**

- ✓ Includes 7" TFT LCD monitor & 1 rear view Sony CCD Camera
- ✓ Suitable for 12/24V applications
- ✓ Colour camera protected to IP68
- ✓ Supplied with remote control
- ✓ 1 additional camera can be used with this kit



**Waterproof camera**

## 3-CHANNEL 5" CCTV KIT - 12/24V

PART NO. **0-776-75**

- ✓ 3-channel TFT-LCD monitor and 1/3" Sony CCD camera
- ✓ Suitable for 12/24V applications
- ✓ Infrared camera protected to IP68
- ✓ Inputs for up to 3 cameras



**5" monitor**

## 2-CHANNEL WIRELESS 7" CCTV KIT - 12/24V

PART NO. **0-775-39**

- ✓ Includes 7" TFT-LCD monitor & 1 rear view Camera
- ✓ Can receive signal from up to 2 cameras
- ✓ Camera protected to IP68
- ✓ Supplied with remote control
- ✓ Built-in wireless receiver with range of 120m



**Easy installation**



## WIRELESS 4.3" CCTV KIT - 12/24V

PART NO. **0-776-43**

- ✓ Colour TFT-LCD monitor & 1 rear view Camera
- ✓ Can receive signal from up to 1 camera
- ✓ Camera protected to IP68
- ✓ Built-in wireless receiver with range of 120m
- ✓ Easy installation with strong suction mount



**Easy installation**



## 2-CHANNEL MIRROR MONITOR CCTV KIT - 12/24V

PART NO. **0-775-47**

- ✓ 7" Colour TFT LCD wide screen monitor
- ✓ Rear view Sony CCD Camera protected to IP68
- ✓ Shockproof rating of up to 8G
- ✓ Clips onto existing rear-view mirror, compatible with rear view mirrors 63.2mm to 82mm high



**Wide screen monitor**



## UNIVERSAL BRAKE LIGHT CAMERA KIT - 12/24V

- ✓ 7" High resolution monitor
- ✓ 170° View angle
- ✓ Camera protected to IP68



Universal Brake Light Camera kit  
PART NO. **0-099-40**

Universal Brake Light Camera kit  
PART NO. **0-099-45**



## NUMBER PLATE CAMERA KIT - 12/24V

- ✓ 7" High resolution monitor
- ✓ Camera protected to IP68



Universal Brake Light Camera kit  
PART NO. **0-775-17**

Universal Brake Light Camera kit  
PART NO. **0-775-27**



# WARNING LIGHTS & WORK LAMPS

Durite provides a wide range of premium, great value LED light bars and lamps with a robust design. Each LED lamp comes with a 3-year warranty as standard.

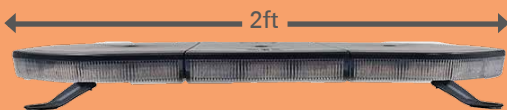


## R65 LOW PROFILE AMBER LED LIGHT BARS - 12/24V

- ✓ 360° Light output, super bright LEDs
- ✓ Waterproof to IP67
- ✓ 10 Flash patterns
- ✓ E-Marked, ECE R10, ECE R65 approved
- ✓ 3-year warranty



Magnetic  
Part no. 0-443-45



4-bolt Part no. 0-443-40

Other sizes available  
1ft, 2ft, 3ft, 4ft, 5ft

## 12/24V LED WORK LAMPS



27W, IP67, 1700Lm  
9-LED work lamp  
Part no. 0-420-46



54W, IP69K, 4500Lm  
Square COB LED work lamp  
Part no. 0-420-86

## R10 AMBER LED BEACONS

- ✓ Weatherproof & dust-resistant
- ✓ 3 flash patterns
- ✓ 12/24V
- ✓ E-Marked, R10 approved



Single bolt  
Part no. 0-445-06



Magnetic  
Part no. 0-445-60

## MAGNETIC RECHARGEABLE LED BEACON WITH REMOTE CONTROL

- ✓ Wireless control up to 25m
- ✓ 5200mAh Li-Ion battery
- ✓ Up to 8hrs run time
- ✓ Protected to IP65
- ✓ E-Marked, R10



Rechargeable  
Part no. 0-445-14

## R10 WARNING LIGHTS

- ✓ 19 Flash patterns
- ✓ Protected to IP67
- ✓ E-Marked, R10 approved



4-LED AMBER | Part no. 0-441-72



6-LED AMBER | Part no. 0-441-70

## R65 WARNING LIGHTS

- ✓ 20 Flash patterns
- ✓ Protected to IP68
- ✓ E-Marked, R65 Class 1



3-LED AMBER | Part no. 0-441-30



6-LED AMBER | Part no. 0-441-00

## LED WARNING FLARES

- ✓ 16 SMD LEDs per unit
- ✓ Strong magnetic base
- ✓ 9 flash patterns
- ✓ Protected to IP67



Single Flare  
Part no. 0-446-61

6 Flares  
Part no. 0-446-60

# INTERIOR LIGHTS

Durite stocks all your vehicle lighting requirements, external and interior lights. Durite offers one of the most versatile LED lighting range in the market that includes models suitable for refrigerated vehicles.

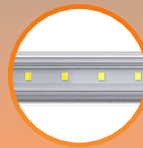


## LINEAR LED BATTEN INTERIOR LIGHTS

- ✓ Ultra bright white SMD LEDs
- ✓ Waterproof to IP67
- ✓ 1ft, 2ft & 4ft
- ✓ E-Marked, R10 approved



On/Off switch



Linear SMD LEDs



L 380 x W 25 x H 13 mm



L 620 x W 25 x H 13 mm



L 1120 x W 25 x H 13 mm

### WITH SWITCH

- 1FT, 400LM | Part no. 0-668-21
- 2FT, 790LM | Part no. 0-668-22
- 4FT, 1200LM | Part no. 0-668-23

### NO SWITCH

- 1FT, 400LM | Part no. 0-668-41
- 2FT, 790LM | Part no. 0-668-42
- 4FT, 1200LM | Part no. 0-668-43

## LED SCENE LIGHTS

- ✓ 6500K cool white LEDs
- ✓ 1W SMD LEDs
- ✓ Protected to IP68
- ✓ 40° angle scene light
- ✓ E-Marked, R10 approved



9W LED scene light  
10-30V | 40° | 725Lm  
Part no. **0-668-55**

L 129 x W 68 x H 46mm



18W LED scene light  
10-30V | 40° | 1450Lm  
Part no. **0-668-56**

L 229 x W 68 x H 46mm



27W LED scene light  
10-30V | 40° | 2175Lm  
Part no. **0-668-57**

L 329 x W 68 x H 46mm

## R10 LED ROOF LAMP WITH SWITCH

- ✓ L 400 x W 25 x H 17mm
- ✓ 1200 lumens



PART NO. 0-668-80

## LED ROOF LAMP WITH NIGHT LIGHT

- ✓ 6 red LED night light facility
- ✓ 192 lumens
- ✓ 12 warm white LEDs
- ✓ Ø 69mm - Depth 9.6 mm



PART NO. 0-668-05

## LED ROUND ROOF LAMP

- ✓ 21 bright white SMD LEDs
- ✓ Protected to IP67
- ✓ 410 lumens
- ✓ Ø 155mm - Depth 15.7mm



PART NO. 0-668-06

## BRIGHT LED LAMP WITH SWITCH

- ✓ 117 white LEDs
- ✓ 338 lumens
- ✓ Integral rocker switch & flying leads
- ✓ Ø 107mm x Depth 23mm



PART NO. 0-668-13

## ROOF LAMP WITH 120 LEDs

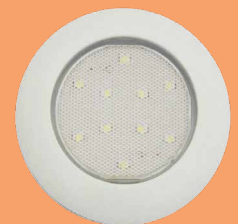
- ✓ 120 white LEDs
- ✓ 480 lumens
- ✓ Integral rocker switch & flying leads
- ✓ L 129 x W 77 x H 21mm



PART NO. 0-668-14

## CIRCULAR INTERIOR LAMP

- ✓ Ø 75mm, Depth 8.7mm
- ✓ 665 lumens



PART NO. 0-668-11

## POWER INVERTERS

COMPACT, HIGH QUALITY MODIFIED & SINE WAVE

- ✓ Suitable for smart charge vehicles
- ✓ Euro 6 compatible
- ✓ High-quality industrial components
- ✓ High peak capacity for start-up demands
- ✓ Fast charge USB & 2 sockets
- ✓ Protected against overload, over temperature, low battery & short circuits



### MODIFIED WAVE

#### 1000W, 230VAC

Peak output 2000W  
12V | 0-856-20

#### 1500W, 230VAC

Peak output 3000W  
12V | 0-856-25

#### 2000W, 230VAC

Peak output 4000W  
12V | 0-856-26

#### 3000W, 110VAC

Peak output 6000W  
12V | 0-856-41

#### 3000W, 230VAC

Peak output 6000W  
12V | 0-856-40

### SINE WAVE

#### 1000W, 230VAC

Peak output 2000W  
12V | 0-857-10

#### 1500W, 230VAC

Peak output 3000W  
12V | 0-857-16

#### 2000W, 230VAC

Peak output 4000W  
12V | 0-857-20

#### 2500W, 230VAC

Peak output 5000W  
12V | 0-857-25

#### 3000W, 230VAC

Peak output 6000W  
12V | 0-857-30

### 12V SUPER CAPACITOR BOOSTER PACK

PART NO. 0-649-75

- ✓ 6 x 720F super capacitors
- ✓ Starts up to 6L petrol & 3L diesel vehicles
- ✓ Peak current 800A
- ✓ 6Ah back up battery



**"No need to pre-charge"**

### 12V MINI LI-POLYMER BOOSTER PACK

PART NO. 0-649-28

- ✓ 16,000mAh
- ✓ Starts up to 7L petrol & 5L diesel vehicles
- ✓ Peak current 2000A
- ✓ Comes with smart jump cables



**"Power up your vehicle in seconds"**

### 12/24V USB SOCKETS



Part no. 0-601-08

- ✓ Two USB ports, output 5V 3.1 ADC total
- ✓ Black ABS plastic



Part no. 0-534-15

- ✓ Voltmeter
- ✓ 3.0 USB
- ✓ 1 x 3.0A QC port and 1 x C type charge port



Part no. 0-601-13

- ✓ Quick charge 3.0 USB, 5V
- ✓ 2 x 2.4A max port and 1 x 3.0A QC port



Part no. 0-601-12

- ✓ Quick charge 3.0 USB, 5V
- ✓ 2 x 2.1A port and 1 x 3.0A QC port